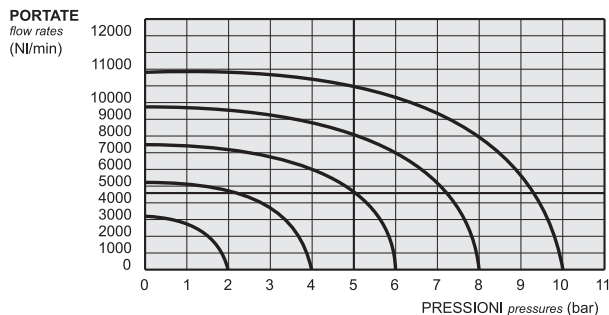
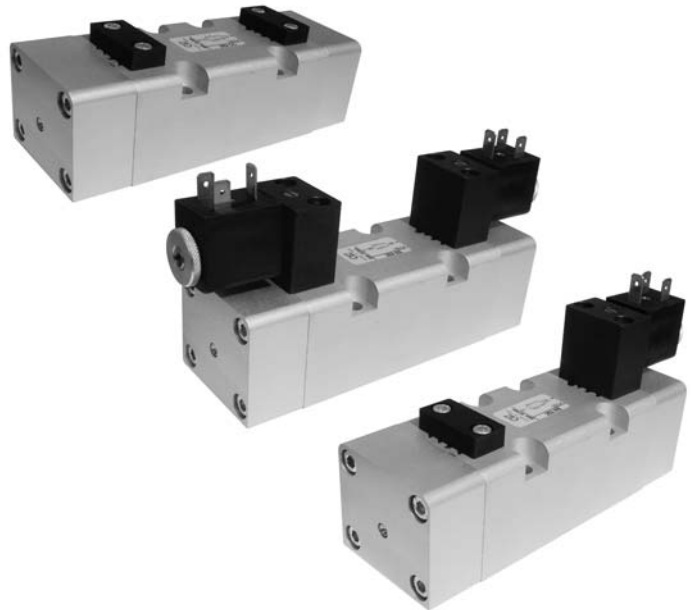


valvole ISO 5599/1 taglia 3

ISO 5599/1 valves - size 3



- Valvole a spola 5/2-5/3
5/2-5/3 spool valves
- Montaggio su basi modulari
Installation on multiple sub-bases
- Azionatore manuale bistabile sull'elettropilota
Detented manual override on the solenoid pilot
- Riarmo manuale della valvola
Manual reset



I prodotti di seguito indicati sono venduti senza bobine, da acquistarsi separatamente.
The following listed products are sold without coils, which are bought separately.

Tempi di risposta - response times

	az. pneumatico <i>pneumatic pilot</i>	az. elettrico <i>solenoid pilot</i>
monostabile <i>mono-stable</i>	TRA (14): 24 ms TRR (12): 43 ms	TRA (14): 39 ms TRR (12): 60 ms
bistabile <i>bi-stable</i>	TRA (14): 30 ms TRR (12): 30 ms	TRA (14): 90 ms TRR (12): 90 ms

Materiali

Corpo: alluminio 11S
Molle: INOX
Guarnizioni: NBR
Spola: alluminio nichelato
Parti interne: ottone OT58

Materials

Body: aluminium 11S
Springs: stainless steel
Seals: NBR
Spool: nickel plated aluminium
Internal parts: brass OT58

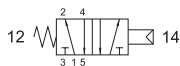
Diametro nominale <i>Nominal orifice</i>	13 mm		
Portata nominale a 6 bar, Δp 1 bar <i>Nominal flow rate at 6 bar, Δp 1 bar</i>	4600 NI/min		
Temperatura di esercizio <i>Temperature range</i>	max +60°C		
Pressione di esercizio <i>Working pressure</i>	al. interna monost. [monost. internal air supply]	al. interna bist. [bi-stable internal air supply]	alim. separata [separate air supply]
	2.5 ... 10 bar 0.25 ... 1 MPa	1 ... 10 bar 0.1 ... 1 MPa	max 10 bar max 1 MPa
Pressione di azionamento (per alimentazione separata) <i>Actuating pressure (for separate air supply)</i>	monostabile [mono-stable]		bistabile [bi-stable]
	2.5 ... 10 bar 0.25 ... 1 MPa		1 ... 10 bar 0.1 ... 1 MPa
Fluido <i>Fluid</i>	Aria filtrata 50 μ con o senza lubrificazione <i>50μ filtered, lubricated or non lubricated air</i>		

valvole ISO 5599/1 taglia 3

ISO 5599/1 valves - size 3

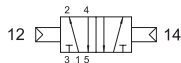


352 MC



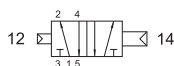
5/2 comando pneumatico - ritorno a molla
5/2 pneumatic pilot - spring return

352 CC



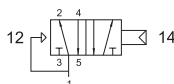
5/2 doppio comando pneumatico
5/2 double pneumatic pilot

352 CCD



5/2 doppio comando pneumatico - con differenziale
5/2 double pneumatic pilot - with differential

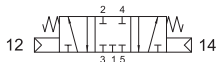
352 CFP



5/2 comando pneumatico - ritorno a molla pneumatica
5/2 pneumatic pilot - pneumatic spring return

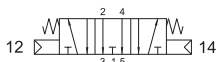
353C CC

centri chiusi
closed centres



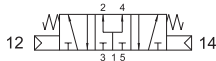
353A CC

centri aperti
open centres

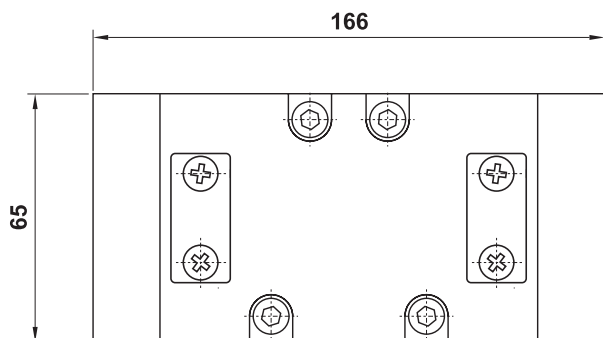
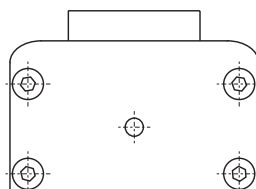
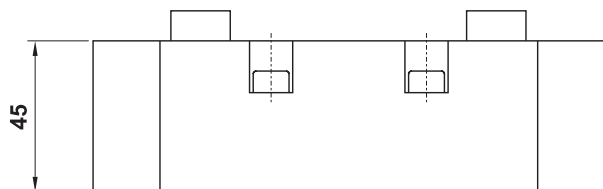
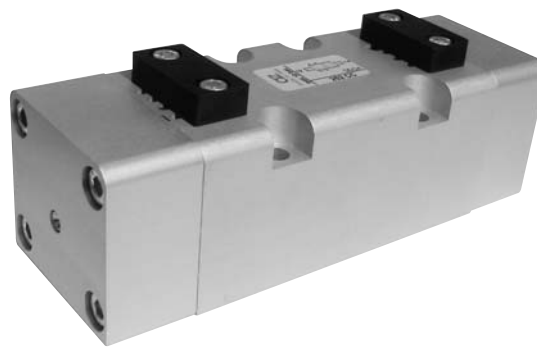


353P CC

centri in pressione
pressurized centres



5/3 doppio comando pneumatico
5/3 double pneumatic pilot



valvole ISO 5599/1 taglia 3

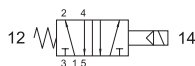
ISO 5599/1 valves - size 3



352 ME

5/2 comando elettrico - ritorno a molla

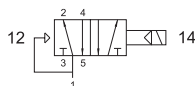
5/2 solenoid pilot - spring return



352 EFP

5/2 comando elettrico - ritorno a molla pneumatica

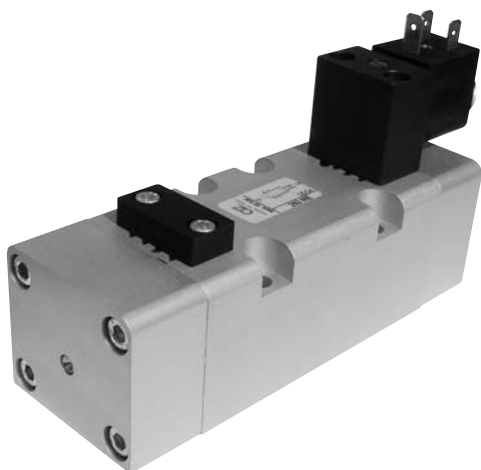
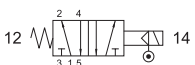
5/2 solenoid pilot - pneumatic spring return



352 ME AS

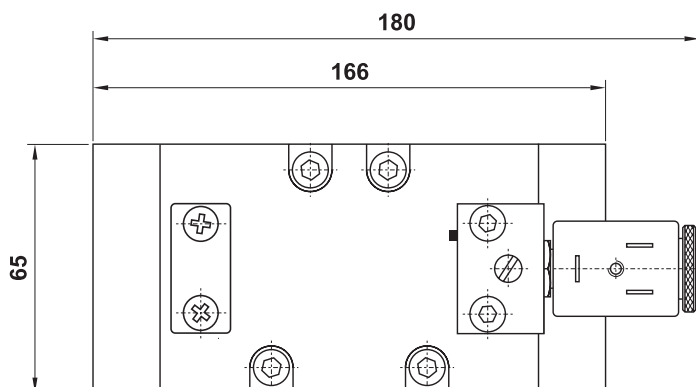
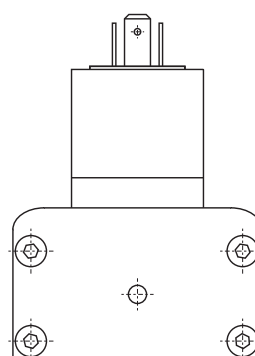
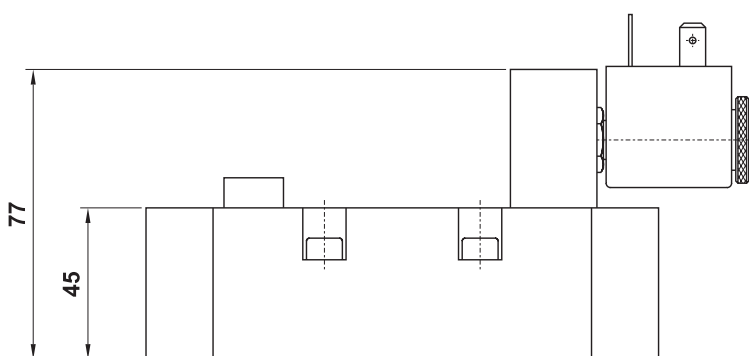
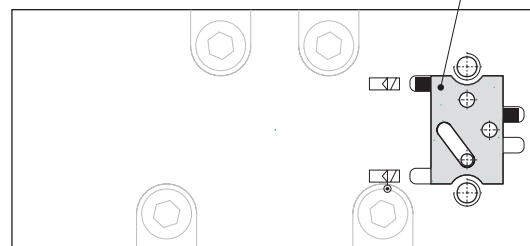
5/2 comando elettrico alimentazione separata - ritorno a molla

5/2 solenoid pilot with separate air supply - spring return



Per cambiare il tipo di alimentazione dell'elettropilota (alimentazione interna o separata) si deve riposizionare la guarnizione in modo che l'estremità evidenziata in nero sia collocata nella posizione corrispondente al simbolo della funzione desiderata.

To change between internal and external air supply it is necessary to align the seal end marked in black with the correct symbol.



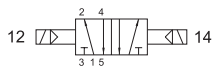
valvole ISO 5599/1 taglia 3

ISO 5599/1 valves - size 3



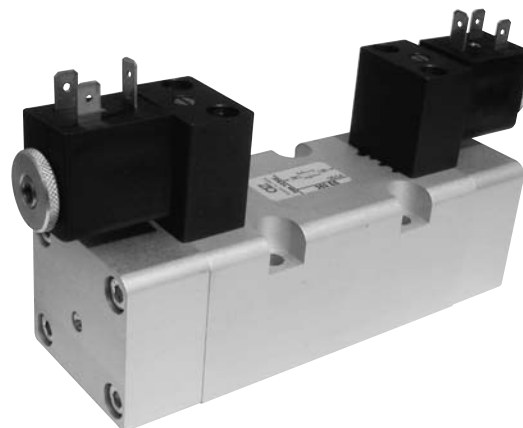
352 EE

5/2 doppio comando elettrico
5/2 double solenoid pilot



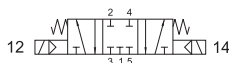
352 EE AS

5/2 doppio comando elettrico alimentazione separata
5/2 double solenoid pilot with separate air supply



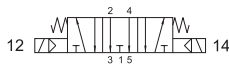
353C EE

centri chiusi
closed centres



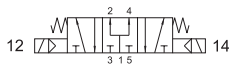
353A EE

centri aperti
open centres



353P EE

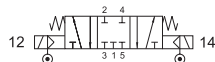
centri in pressione
pressurized centres



5/3 doppio comando elettrico
5/3 double solenoid pilot

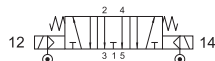
353C EE AS

centri chiusi
closed centres



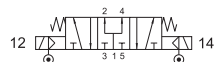
353A EE AS

centri aperti
open centres



353P EE AS

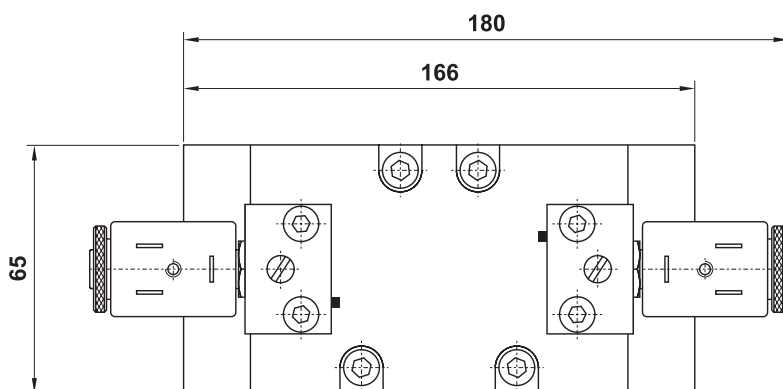
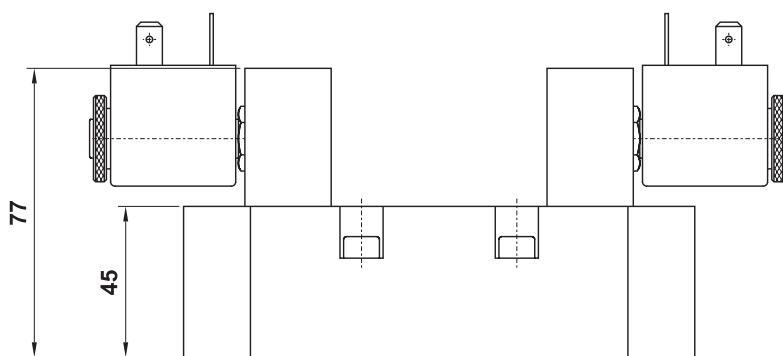
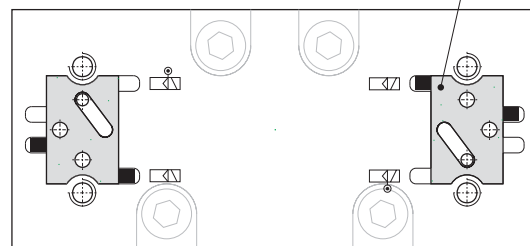
centri in pressione
pressurized centres



5/3 doppio comando elettrico alimentazione separata
5/3 double solenoid pilot with separate air supply

Per cambiare il tipo di alimentazione dell'elettropilota (alimentazione interna o separata) si deve riposizionare la guarnizione in modo che l'estremità evidenziata in nero sia collocata nella posizione corrispondente al simbolo della funzione desiderata.

To change between internal and external air supply it is necessary to align the seal end marked in black with the correct symbol.



sottobasi per valvole ISO 3

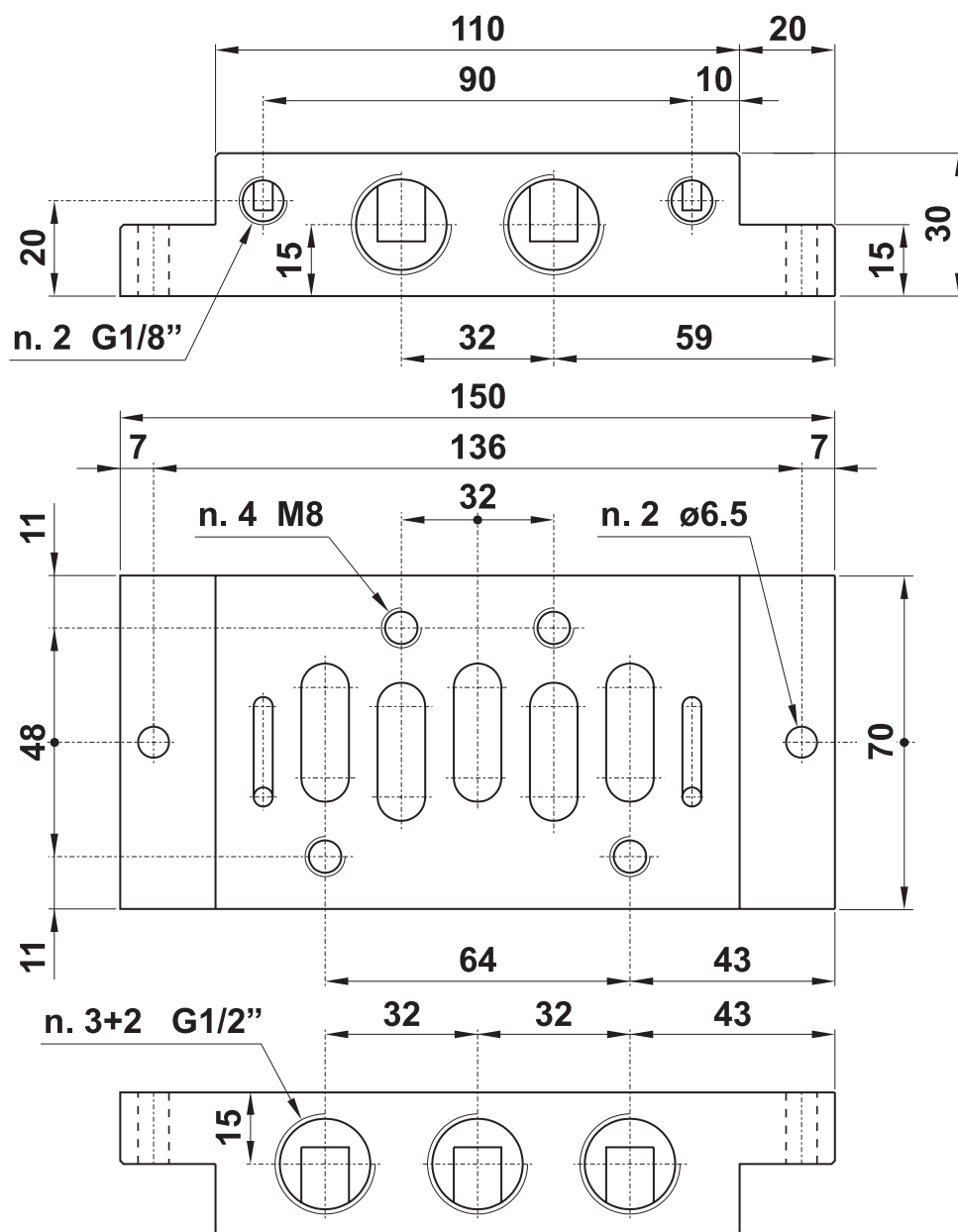
sub-bases for ISO 3 valves



sottobase singola ingresso in asse
individual sub-base with side entry

CODICE DI ORDINAZIONE
ORDER CODE

SL3



È venduta in kit con i particolari necessari al suo assemblaggio.
It is sold in kit with all necessary pieces for installation.

attuatori da pannello nuova serie

new series actuators for panel mounting

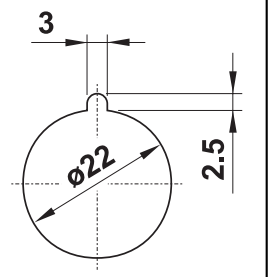


pulsante protetto protected push button

codice code	colori standard standard colours
PR1/NRB	ROSSO, NERO e BIANCO (forniti assieme nel kit) red, black and white (supplied in kit)

Foro per montaggio a pannello
con asola antirotazione

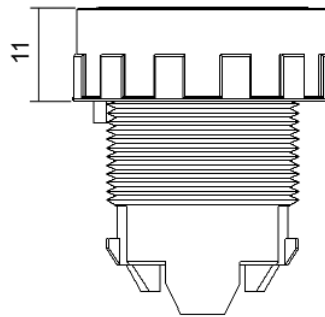
Panel mounting hole with antirotation
feature



- I seguenti colori sono disponibili ordinandoli in aggiunta al kit standard
The following colours can be ordered separately

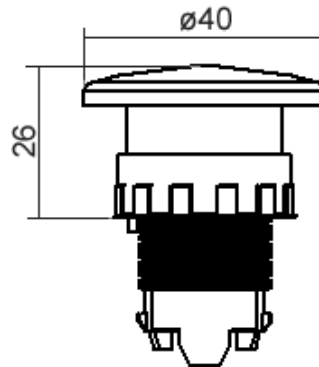
codice code	colore colour
DCV1	VERDE [green]
DCG1	GIALLO [yellow]
DCA1	AZZURRO [light blue]
DCB1	BIANCO [white]

codice code	colore colour
DCN1	NERO [black]
DCR1	ROSSO [red]



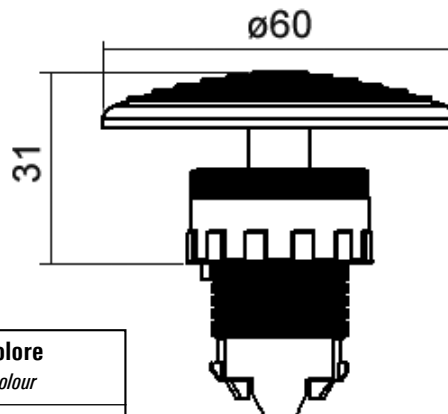
fungo ø40 ø40 mushroom

codice code	descrizione description	colore colour
PF2/40	monostabile assiale [axial mono-stable]	ROSSO [red]
PF1/40	monostabile assiale [axial mono-stable]	NERO [black]
PFB2/40	sblocco a rotazione [turn to unlock]	ROSSO [red]



fungo ø60 ø60 palm

codice code	descrizione description	colore colour
PFBA2	oscillante [multi-directional]	ROSSO [red]
PFB2/60	sblocco a rotazione [turn to unlock]	ROSSO [red]



attuatori da pannello nuova serie

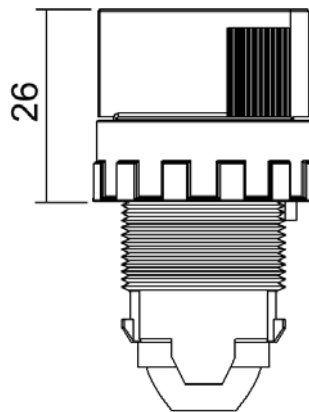
new series actuators for panel mounting



selettore leva corta

short lever selector

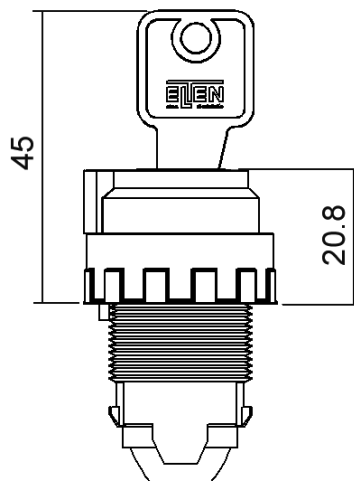
codice <i>code</i>	colore <i>colour</i>	funzione <i>function</i>
SS1/CD	NERO <i>black</i>	0 1
SS1/CD-R	NERO <i>black</i>	0 ← 1
SS1/E	NERO <i>black</i>	2 0 1
SS1/E-RC	NERO <i>black</i>	2 → 0 ← 1



selettore a chiave 2 posizioni

2 positions key selector

codice <i>code</i>	posizione di estrazione chiave <i>position to pull the key out</i>
SSC/CD-V	solo centrale <i>[only in central position]</i>
SSC/CD-Z	ambidue <i>[both positions]</i>



Materiale <i>Material</i>	Materiale plastico ad alte prestazioni <i>High performance plastic material</i>
Grado di protezione <i>Protection degree</i>	IP 55
Corrispondenza alle norme <i>According to norms</i>	EN 60947-5-1 VDE 0660 IEC 947-5
Temperatura di esercizio <i>Temperature range</i>	max +55°C
Durata meccanica <i>Mechanical life time</i>	500000 manovre <i>[actuations]</i>

mini-regolatore di pressione con by-pass

mini pressure regulator with by-pass

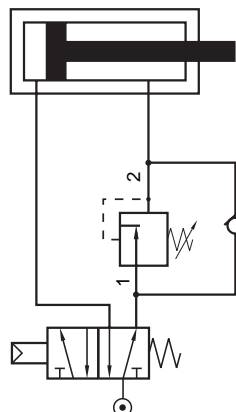


- Regolatore a pistone
Piston-type pressure regulator
- Con valvola di non ritorno per scavalcare il regolatore nel senso da 2 a 1
With non-return valve to by-pass the regulator in direction from 2 to 1
- Corpo in alluminio 11S
Body in aluminium 11S
- Grande sensibilità
Sensitive regulation
- Installazione in linea o a pannello
In-line or panel mounting



CODICE DI ORDINAZIONE <i>ORDER CODE</i>		16.070.4	16.071.4
Attacchi <i>Ports</i>		G1/4"	G1/4"
Temperatura di esercizio <i>Temperature range</i>		max +50°C	max +50°C
Pressione di alimentazione <i>Inlet pressure range</i>	$p_{1 \text{ min}}$ $p_{1 \text{ max}}$	0 bar; 0 MPa 10 bar; 1 MPa	0 bar; 0 MPa 10 bar; 1 MPa
Pressione di utilizzo <i>Outlet pressure range</i>	$p_{2 \text{ min}}$ $p_{2 \text{ max}}$	0.5 bar; 0.05 MPa 8 bar; 0.8 MPa	0.2 bar; 0.02 MPa 1 bar; 0.1 MPa
Differenza minima di pressione (Δp) <i>Minimum pressure difference (Δp)</i>	$p_1 - p_2$	0.2 bar; 0.02 MPa	0.1 bar; 0.01 MPa
Isteresi <i>Hysteresis</i>	$p_1 = 10 \text{ bar} / p_2 = 0 \text{ bar}$ $p_1 = 10 \text{ bar} / p_2 = 8 \text{ bar}$	1.6 0.6	1.6 0.6
Portata raccomandata <i>Recommended flow rate</i>	$p_2 = 6.3 \text{ bar a } 25 \text{ m/s}$ $p_2 = 6.3 \text{ bar at } 25 \text{ m/s}$	Q_n	550 NI/min
Portata 2 \Rightarrow 1 <i>Flow rate 2 \Rightarrow 1</i>	$p = 6 \text{ bar}; \Delta p = 1 \text{ bar}$		180 NI/min

schema applicativo
application sketch



Ideale per l'applicazione tra cilindro e valvola di comando
Ideal for use between cylinder and valve

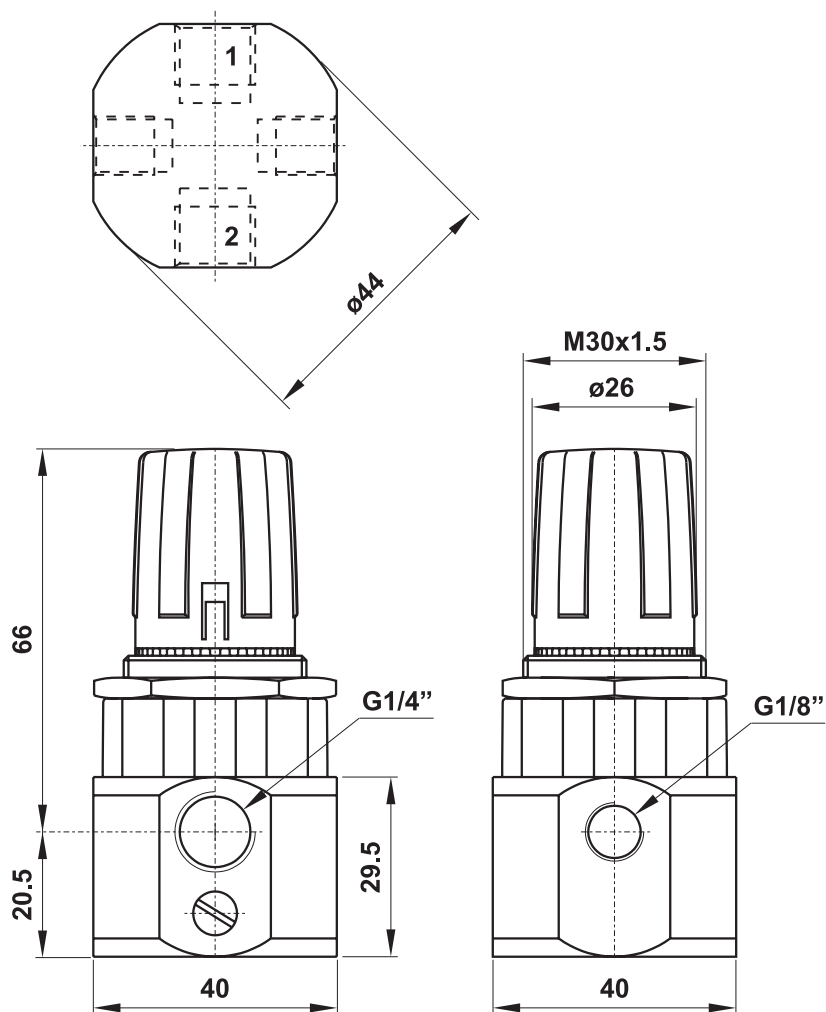
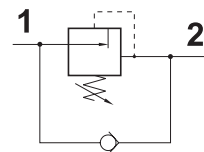
mini-regolatore di pressione con by-pass

mini pressure regulator with by-pass



Il manometro deve essere acquistato separatamente.

The manometer is bought separately.



Materiali

Corpo: alluminio 11S anodizzato naturale

Molle: INOX

Guarnizioni: NBR

Parti interne: ottone, INOX e polimeri

Materials

Body: aluminium 11S (natural anodize treatment)

Springs: stainless steel

Seals: NBR

Internal parts: brass, stainless steel and polymer

cilindri corsa breve

short stroke cylinders



versione antirotazione

version anti-rotation

D 1 1 L 2 0 3 2 0 0 4 0

famiglia
product family

stelo
piston-rod

guarnizioni
seals

esecuzione
execution

corsa
stroke

alesaggio
bore

funzione
function



Famiglia [product family]

D cilindri corsa breve [short stroke cylinders]

Esecuzione [execution]

L magnetico antirotazione [magnetic anti-rotation]

Stelo [piston-rod]

1 C45 cromato [C45 chromium plated]

Funzione [function]

2 doppio effetto non ammortizzato
[double acting without pneumatic cushioning]

Guarnizioni [seals]

- 1** NBR
- 2** tutte le guarnizioni in VITON
[all seals in VITON]
- 3** guarnizioni dello stelo in VITON [rod seals in VITON]

Materiali

Camicia: alluminio
Stelo: C45 cromato o INOX AISI 304
Testate: alluminio con boccia guida stelo
Pistone: alluminio
Guarnizioni: NBR o VITON
Guarnizione stelo: poliuretano o VITON
Magnete: neodimio fino all'alesaggio 25
 plastroferrite dall'alesaggio 32 al 100

Materials

Barrel: aluminium
Piston-rod: C45 (chromium plated) or stainless steel
End-cups: aluminium with rod guide
Piston: aluminium
Sealings: NBR or VITON
Piston-rod sealing: polyurethane or VITON
Magnet: neodymium from bore 16 to 25
 magnetic iron compound from bore 32 to 100

Pressione di esercizio <i>Working pressure</i>	max 10 bar max 1 MPa
Temperatura di esercizio <i>Temperature range</i>	NBR: max +60°C VITON: max +110°C
Alesaggi <i>Bores</i>	16; 20; 25; 32; 40; 50; 63; 80; 100 mm
Corse <i>Strokes</i>	5 ... 100 mm
Fluido <i>Fluid</i>	Aria filtrata 50µ con o senza lubrificazione 50µ filtered, lubricated or non lubricated air

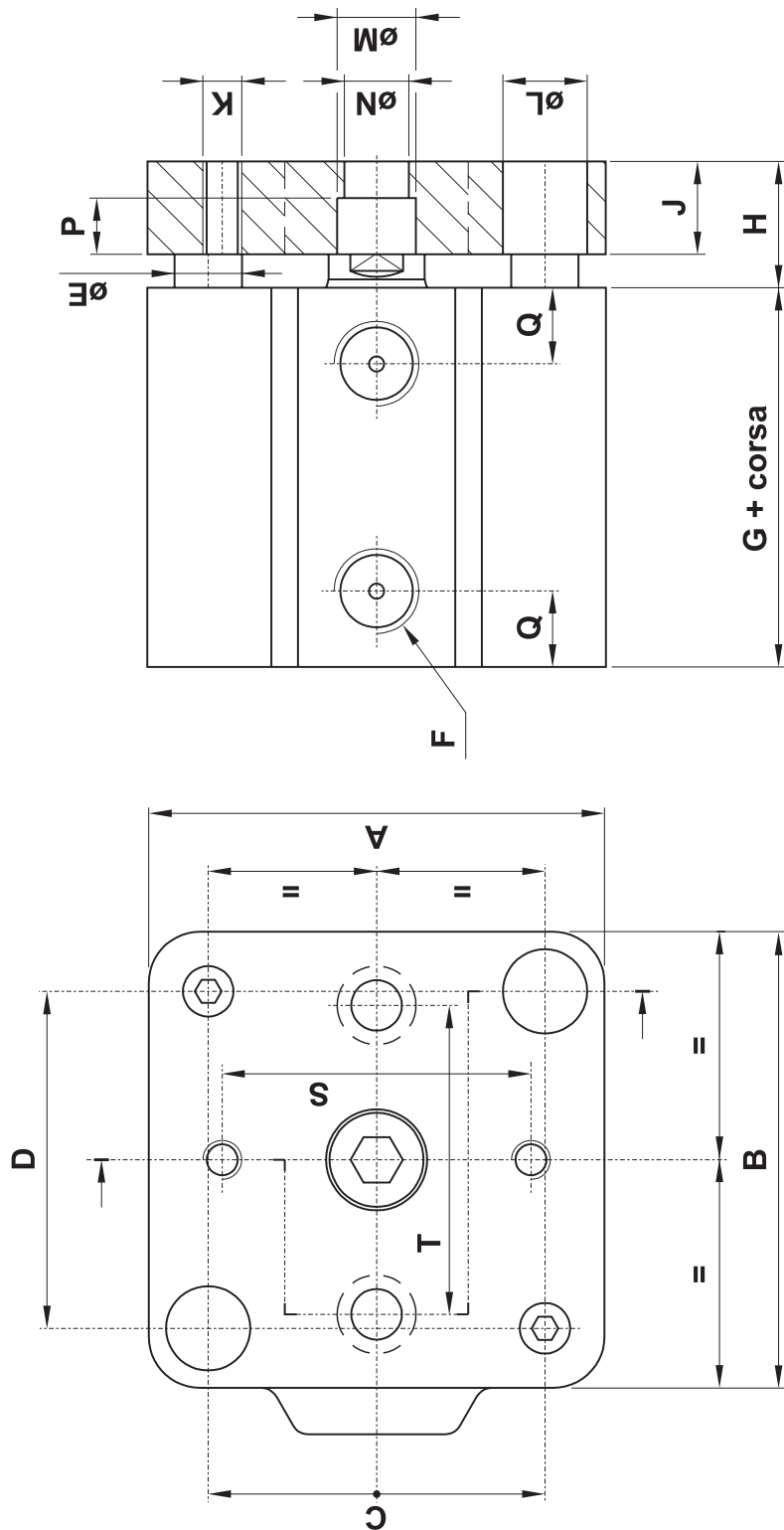
cilindri corsa breve

short stroke cylinders



VERSIONE ANTIROTAZIONE - alesaggio 16, 20, 25, 32, 40, 50, 63, 80, 100

Version anti-rotation - bore 16, 20, 25, 32, 40, 50, 63, 80, 100



Ø	A	B	C	D	E	F	G	H	J	K	L	M	N	O	P	Q	S	T
16	28	28	20	20	4	M5	36	13.5	11	M3	6.5	6.5	3.5	8	3.5	8	15	20
20	32	32	22	22	6	M5	36	13.5	11	M4	8	8	4.8	8.5	5	8.5	18	22
25	38	39	26	28	6	G1/8"	38	13.5	11	M4	8	8	4.8	9	5	9	22	22
32	45	48	32	36	8	G1/8"	46.2	17	13	M5	10	10	5.5	9	6	9	26	36
40	54	54	40	40	8	G1/8"	46.2	17	13	M5	10	10	5.5	10	6	10	34	34
50	64.6	64.6	50	50	10	G1/8"	50	20	15	M6	11	11	6.5	11.5	6.5	11.5	43	43
63	79.6	79.6	62	62	10	G1/8"	53	20	15	M6	15	14	9	11.5	9	11.5	55	55
80	99.6	99.6	82	82	12	G1/4"	56.4	23.8	16.5	M8	15	14	9	13.8	9	13.8	70	70
100	123.6	123.6	103	103	12	G1/4"	67	25.8	20	M8	18	14	9	17	9	17	94	94

cilindri compatti guidati

guided compact cylinders



- Grande affidabilità e lunga durata
High reliability and long life time
- Versione magnetica standard
Standard magnetic version
- Sensori magnetici standard (pag. 364-367 catalogo generale)
Standard magnetic sensors (page 364-367 general catalogue)
- Alimentazione laterale o dorsale
Air ports on the top or on the side



CG B B 1 6 - 0 1 0

famiglia
product family

tipo
type

corsa
stroke

alesaggio
bore

Famiglia [product family]

CG cilindri compatti guidati [*guided compact cylinders*]

Tipo [type]

B con bronzine [*with sintered bronze rod guide*]

BB con cuscinetti a rotolamento [*with linear ball bearings*]

Materiali

Corpo: alluminio anodizzato

Stelo: C40 cromato

Piastra: acciaio nichelato

Guarnizioni: NBR e poliuretano

Guarnizione stelo: poliuretano

Materials

Body: aluminium (anodize treatment)

Piston-rod: C40 (chromium plated)

Carrier plate: nickel plated steel

Sealings: NBR and polyurethane

Piston-rod sealing: polyurethane

corse disponibili

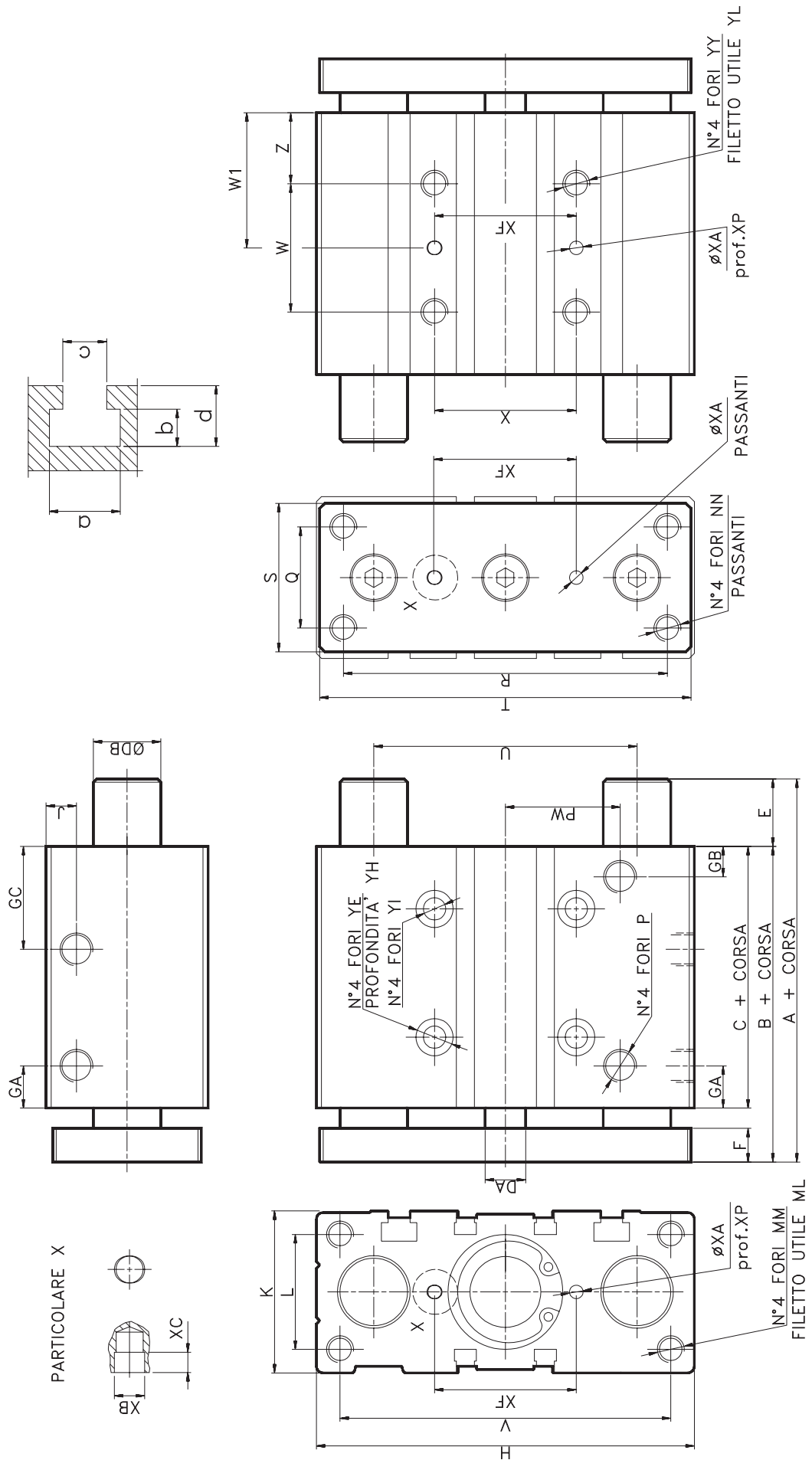
available strokes

alesaggio corsa stroke	bore	16	20	25	32	40	50	63
10		X						
20		X	X	X				
25					X	X	X	X
30		X	X	X				
40		X	X	X				
50		X	X	X	X	X	X	X
75		X	X	X	X	X	X	X
100		X	X	X	X	X	X	X
125			X	X	X	X	X	X
150			X	X	X	X	X	X
175			X	X	X	X	X	X
200			X	X	X	X	X	X

Pressione di esercizio <i>Working pressure</i>	max 10 bar max 1 MPa
Temperatura di esercizio <i>Temperature range</i>	max +60°C
Alesaggi <i>Bores</i>	16; 20; 25; 32; 40; 50; 63 mm
Corse <i>Strokes</i>	Vedi tabella in questa pagina <i>See table in this page</i>
Fluido <i>Fluid</i>	Aria filtrata 50µ con o senza lubrificazione <i>50µ filtered, lubricated or non lubricated air</i>

cilindri compatti guidati

guided compact cylinders



cilindri compatti guidati

guided compact cylinders



Ø	B	C	DA	F	GA	GB	GC	H	J	K	L	MM	ML	NN	P	PW	Q	R	S	T	U	V	X	YY	YL	YE	YH	YI	Z	XF	XA	XP	XB	XC	a	b	c	d
16	4.6	3.3	8	8	11	8	18	6.4	5	30	2.2	M5	12	M5	M5	19	16	5.4	2.5	6.2	4.6	5.6	2.4	M5	10	8	4.5	4.3	5	2.4	3	6	3.5	3	7.4	3.7	4.4	6.2
20	5.3	3.7	10	10	10.5	8.5	24.5	8.3	6.5	36	2.4	M5	13	M5	G1/8	2.5	18	7.0	3.0	8.1	5.4	7.2	2.8	M6	12	9.5	5.5	5.6	1.7	2.8	3	6	3.5	3	8.4	4.5	5.5	7.3
25	5.3	3.7	10	10	11.5	9	2.5	9.3	7.5	4.2	3.0	M6	15	M6	G1/8	2.8	2.6	7.8	3.8	9.1	6.4	8.2	3.4	M6	12	9.5	5.5	5.6	1.7	3.4	4	6	4.5	3	8.4	4.5	5.5	7.5
32	5.9	3.7	12	12	12.5	9	30.5	11.2	9	4.8	3.4	M8	20	M8	G1/8	3.4	3.0	9.6	4.4	11.0	7.8	9.8	4.2	M8	16	11	7.5	6.6	2.1	4.2	4	6	4.5	3	10.5	5.5	6.5	9
40	6.6	4.4	12	12	14	10	31	12.0	9	5.4	4.0	M8	20	M8	G1/8	3.8	3.0	10.4	4.4	11.8	8.6	10.6	5.0	M8	16	11	7.5	6.6	2.2	5.0	4	6	4.5	3	10.5	5.5	6.5	9
50	7.2	4.4	16	16	14	11	3.5	14.8	9.5	6.4	4.6	M10	22	M10	G1/4	4.7	4.0	1.30	6.0	14.6	11.0	1.30	6.6	M10	20	14	9	8.6	2.2	6.6	5	8	6	4	13.5	7.5	8.5	12
63	7.7	4.9	16	16	16.5	13.5	3.5	16.2	11	7.8	5.8	M10	22	M10	G1/4	5.5	5.0	1.30	7.0	15.8	12.4	14.2	8.0	M10	20	14	9	8.6	2.4	8.0	5	8	6	4	17.8	10	11	16.5

Ø		quota W (CORSE-STROKES)		quota W1 (CORSE-STROKES)	
16	24 (10-30)	4.4 (4.0-100)	17 (10-30)	27 (4.0-100)	
20	24 (20-30)	4.4 (4.0-100)	29 (20-30)	39 (4.0-100)	77 (125-200)
25	24 (20-30)	4.4 (4.0-100)	29 (20-30)	39 (4.0-100)	77 (125-200)
32	24 (25)	4.8 (50-100)	33 (25)	45 (50-100)	83 (125-200)
40	24 (25)	4.8 (50-100)	34 (25)	46 (50-100)	84 (125-200)
50	24 (25)	4.8 (50-100)	36 (25)	48 (50-100)	86 (125-200)
63	28 (25)	5.2 (50-100)	38 (25)	50 (50-100)	88 (125-200)

Ø		quota A (CORSE-STROKES)		quota E (CORSE-STROKES)		DB	
16	4.6 (10-30)	6.6 (4.0-100)	0 (10-30)	20 (4.0-100)	8		
20	5.3 (20-30)	8.5 (4.0-200)	0 (20-30)	32.5 (4.0-200)	12		
25	5.3 (20-30)	8.6 (4.0-200)	0 (20-30)	32.5 (4.0-200)	12		
32	9.7 (25-50)	10.7 (7.5-200)	37.5 (25-50)	47.5 (7.5-200)	20		
40	9.7 (25-50)	10.7 (7.5-200)	31 (25-50)	41 (7.5-200)	20		
50	10.6 (25-50)	11.4 (7.5-200)	34.5 (25)	46 (7.5-200)	25		
63	10.6 (25-50)	11.4 (7.5-200)	29.5 (25)	37 (7.5-200)	25		

Ø		quota A (CORSE-STROKES)		quota E (CORSE-STROKES)		DB	
16	4.6 (10-50)	6.4 (7.5-100)	0 (10-50)	18.5 (7.5-100)	10		
20	5.3 (20-50)	8.4 (7.5-200)	0 (20-50)	31.5 (7.5-200)	12		
25	5.3 (20-50)	8.5 (7.5-200)	0 (20-50)	31.5 (7.5-200)	16		
32	9.7 (25-50)	10.7 (7.5-200)	37.5 (25-50)	47.5 (7.5-200)	20		
40	9.7 (25-50)	10.7 (7.5-200)	31 (25-50)	41 (7.5-200)	20		
50	10.6 (25-50)	11.8 (7.5-200)	34.5 (25-50)	46 (7.5-200)	25		
63	10.6 (25-50)	11.8 (7.5-200)	29.5 (25-50)	41 (7.5-200)	25		

con bronzine
with sintered bronze rod guide

con cuscinetti a rotolamento
with linear ball bearings

quote W e W1
dimensions W and W1

peso in grammi [weight in grams]

Ø	10	20	25	30	40	50	75	100	125	150	175	200
16	352	4.02		4.52	5.02	5.52	7.52	9.02				
20		6.89		8.30	9.10	9.90	13.10	15.10	16.25	17.40	18.55	19.70
25		8.70		9.90	10.80	12.60	16.80	2.100	2.500	2.900	3.300	3.700
32			1.770			2.120	2.770	3.080	3.408	3.737	4.066	4.395
40			1.990			2.390	2.940	3.050	3.460	3.880	4.300	4.720
50			3.355			3.955	4.755	5.355	5.955	6.555	7.155	7.755
63			4.030			5.070	5.786	6.505	7.224	7.943	8.662	9.380

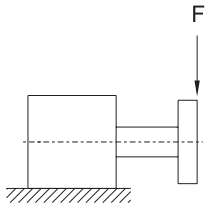
cilindri compatti guidati

guided compact cylinders

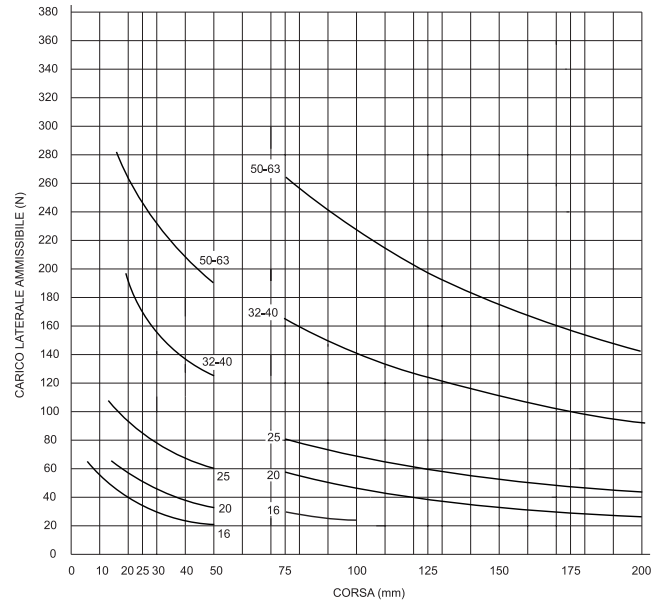


carichi laterali ammissibili con bronzine autolubrificanti

permissible lateral loads with self-lubricating sintered bronze guide



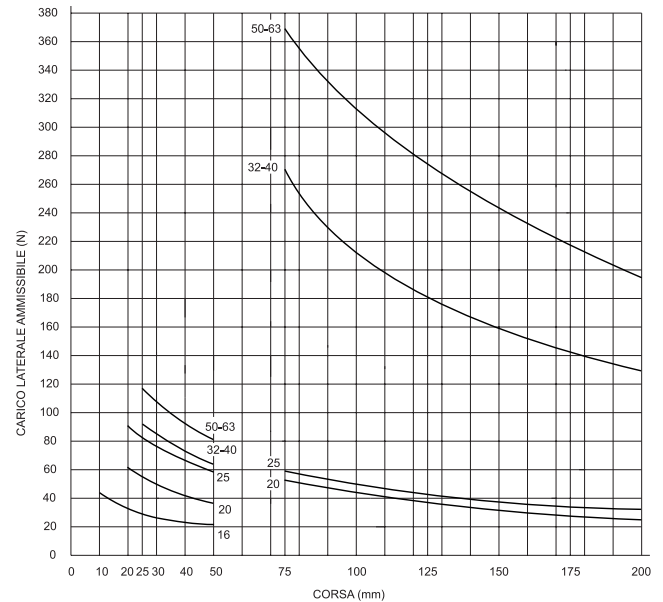
Ø mm	CARICO (N)												
16	56	40		30	25	21	30	24					
20		57		46	38	33	55	45	38	33,5	30	27	
25			93	78	68	60	81	67	60	54	48	43	
32				170			125	166	142	124	110	99	90
40				170			125	166	142	124	110	99	90
50				250			190	265	227	197	177	156	141
63				250			190	265	227	197	177	156	141
CORSE →	10	20	25	30	40	50	75	100	125	150	175	200	



carichi laterali ammissibili con cuscinetti a rotolamento

permissible lateral loads with linear ball bearings

Ø mm	CARICO (N)												
16	44	34		27	23	21							
20		62		50	42	36	53	42	36	31	27	25	
25			94	79	68	60	59	50	43	39	35	33	
32				84			58	270	213	180	159	142	130
40				92			64	270	213	180	159	142	130
50				117			81	370	312	275	243	216	193
63				117			81	370	312	275	243	216	193
CORSE →	10	20	25	30	40	50	75	100	125	150	175	200	



momento torcente ammissibile con bronzine autolubrificanti

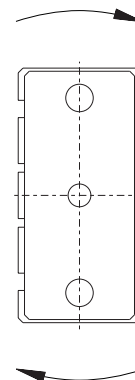
permissible torque with self-lubricating sintered bronze guide

Ø mm	MOMENTO (Nm)												
16	0,65	0,51		0,42	0,36	0,32							
20		0,99		0,84	0,71	0,64	0,97	0,78	0,63	0,54	0,48	0,43	
25			1,98	1,67	1,45	1,28	1,73	1,43	1,31	1,18	1,05	0,94	
32				4,10			3,19	3,97	3,36	2,46	2,2	2	1,84
40				4,51			3,51	4,38	3,70	2,46	2,2	2	1,84
50				6,60			5,19	6,68	5,72	4,68	4,25	3,88	3,5
63				6,60			5,19	6,68	5,72	4,68	4,25	3,88	3,5
CORSE →	10	20	25	30	40	50	75	100	125	150	175	200	

momento torcente ammissibile con cuscinetti a rotolamento

permissible torque with linear ball bearings

Ø mm	MOMENTO (Nm)												
16	0,83	0,65		0,52	0,44	0,40							
20		1,20		0,96	0,81	0,69	1,02	0,93	0,82	0,71	0,64	0,58	
25			2,00	1,69	1,45	1,28	1,26	1,09	0,98	0,87	0,79	0,70	
32				2,04			1,41	6,58	5,19	4,49	3,87	3,58	3,17
40				2,47			1,72	7,25	5,72	4,49	3,87	3,58	3,17
50				3,22			2,22	10,17	8,58	7,75	6,86	5,99	5,30
63				3,22			2,22	10,17	8,58	7,75	6,86	5,99	5,30
CORSE →	10	20	25	30	40	50	75	100	125	150	175	200	

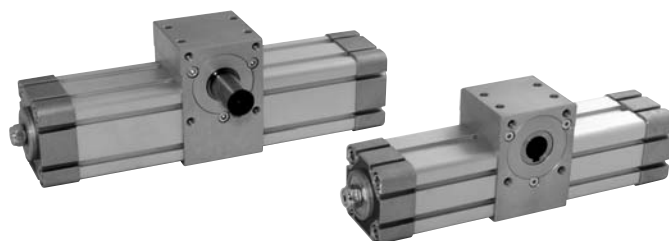


cilindri rotanti

rotary cylinders



- Grande affidabilità e lunga durata
High reliability and long life time
- Versione magnetica standard
Standard magnetic version
- Sensori magnetici standard (pag. 364-367 catalogo generale)
Standard magnetic sensors (page 364-367 general catalogue)
- Ammortizzo pneumatico integrato
Integrated pneumatic cushioning



AR M 1 8 0 - 0 3 2

famiglia
product family

pignone
pinion

alesaggio
bore

angolo di rotazione
rotation angle

Famiglia [product family]

AR cilindri rotanti [rotary cylinders]

Pignone [pinion]

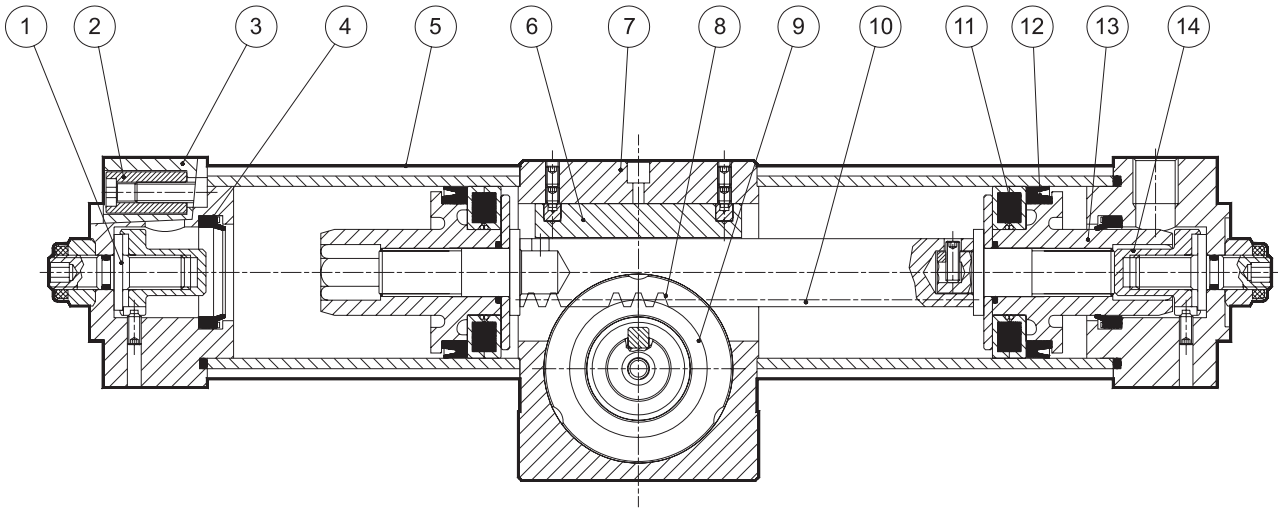
M pignone maschio [male pinion]

F pignone femmina [female pinion]

Pressione di esercizio <i>Working pressure</i>	max 10 bar max 1 MPa
Temperatura di esercizio <i>Temperature range</i>	max +60°C
Alesaggi <i>Bores</i>	32; 40; 50; 63; 80; 100; 125 mm
Angolo di rotazione <i>Rotation angle</i>	90°; 180°; 270°; 360° regolazione angolo: 10° [angle adjustment: 10°]
Fluido <i>Fluid</i>	Aria filtrata 50μ con o senza lubrificazione 50μ filtered, lubricated or non lubricated air

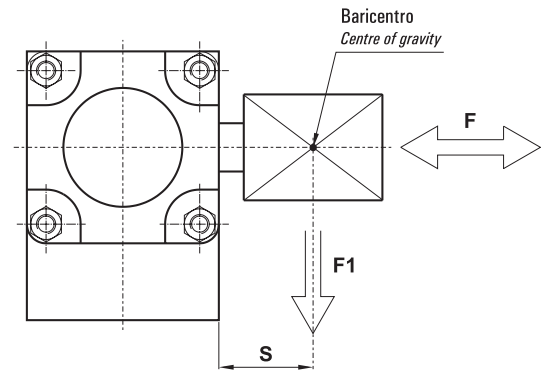
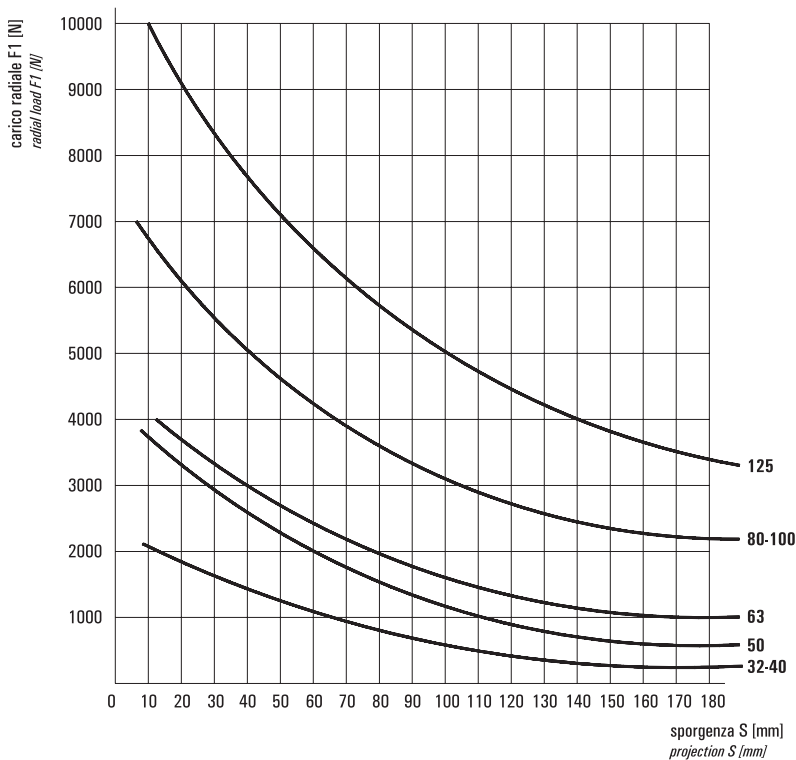
cilindri rotanti

rotary cylinders



- | | |
|--|--|
| <ul style="list-style-type: none"> 1. Vite di regolazione: acciaio zincato 2. Vite per fissaggio testata: acciaio zincato 3. Testata cilindro: alluminio pressofuso 4. Guarnizione ammortizzo: NBR 5. Camicia: estruso in lega alluminio anodizzato 6. Piattino di guida cremagliera: resina acetale Delrin 7. Corpo cilindro rotante: alluminio anodizzato | <ul style="list-style-type: none"> 8. Pignone: acciaio nitrurato 9. Cuscinetto a sfera 10. Cremagliera: acciaio normalizzato 11. Anello magnetico: plastroferrite 12. Guarnizione pistone: NBR 13. Pistone: alluminio pressofuso 14. Vite bloccaggio pistone: acciaio zincato |
|--|--|

Massimo carico radiale F1 con F=0
Maximum radial load F1 with F=0



Massimo carico assiale F con F1=0
Maximum axial load F with F1=0

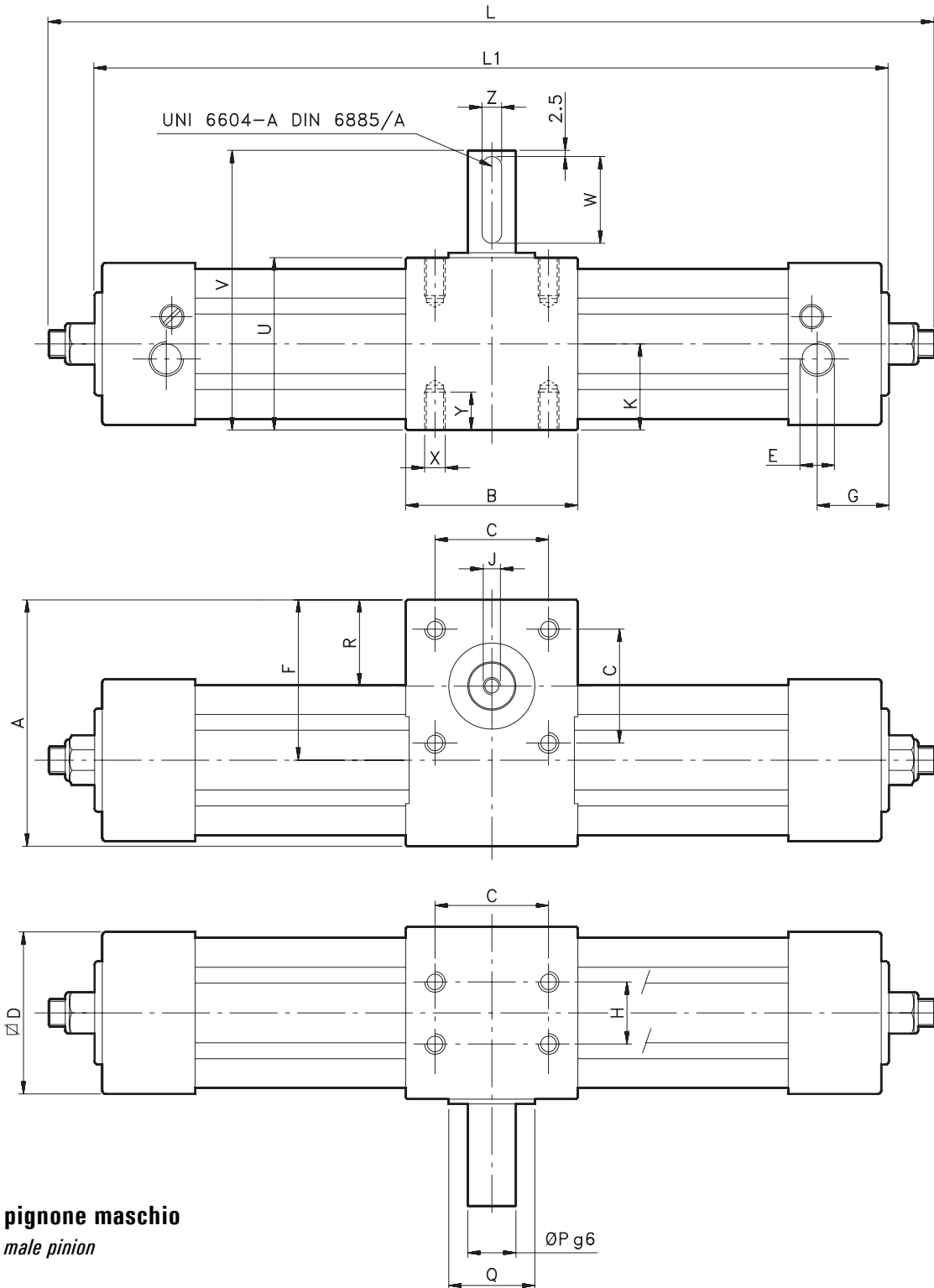
alesaggio bore	F
32	100 N
40	100 N
50	120 N
63	120 N
80	200 N
100	250 N
125	300 N

Momento torcente a 1 bar
Torque at 1 bar

alesaggio bore	M
32	1.2 Nm
40	2.25 Nm
50	3.9 Nm
63	7.3 Nm
80	15.7 Nm
100	26.35 Nm
125	51 Nm

cilindri rotanti

rotary cylinders



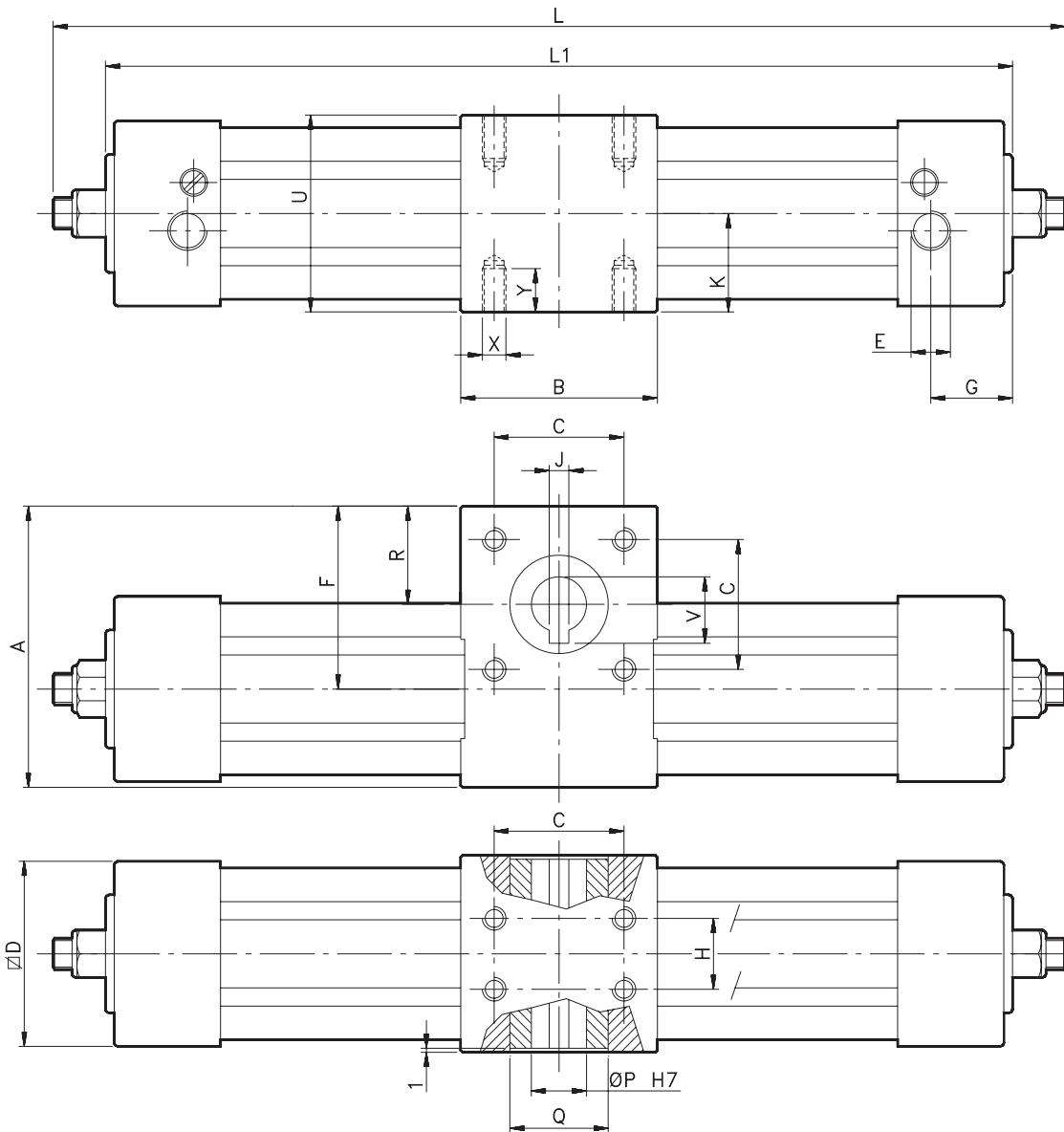
pignone maschio
male pinion

rotazione 90° 90° rotation		
ø CIL.	L	L1
32	238	219
40	282	261
50	306	284
63	353	330
80	408	380
100	451	419
125	520	490
rotazione 180° 180° rotation		
ø CIL.	L	L1
32	285	266
40	339	318
50	369	347
63	428	405
80	507	479
100	558	526
125	652	622
rotazione 270° 270° rotation		
ø CIL.	L	L1
32	332	313
40	396	375
50	432	410
63	503	480
80	606	578
100	665	633
125	784	754
rotazione 360° 360° rotation		
ø CIL.	L	L1
32	379	360
40	453	432
50	495	473
63	578	555
80	705	677
100	772	740
125	916	886

ø CIL.	A	B	C	D	E	F	G	H	J	K	P	Q	R	U	V	W	X	Y	Z
32	71.5	50	33	48	G1/8"	46.5	18	18	M5	25	14	25	25	50	81	25	M6	10	5
40	82	60	40	54	G1/4"	54.5	21	22	M5	30	14	25	30	60	91	25	M6	10	5
50	93	70	50	67	G1/4"	60.5	24	25	M6	32.5	19	30	32.5	65	106	35	M8	13	6
63	109	75	60	78	G3/8"	70.8	26	35	M8	37.5	24	30	37	75	116	35	M8	13	8
80	142	99	80	97	G3/8"	93.5	26	50	M8	49.5	28	45	50	99	150	45	M10	16	8
100	156.5	115	80	115	G1/2"	99	30	60	M10	57.5	38	50	54	115	166	45	M10	16	10
125	188	125	90	140	G1/2"	118	32	70	M10	70	38	60	60	140	191	45	M12	20	10

cilindri rotanti

rotary cylinders



rotazione 90° 90° rotation		
ø CIL.	L	L1
32	238	219
40	282	261
50	306	284
63	353	330
80	408	380
100	451	419
125	520	490
rotazione 180° 180° rotation		
ø CIL.	L	L1
32	285	266
40	339	318
50	369	347
63	428	405
80	507	479
100	558	526
125	652	622
rotazione 270° 270° rotation		
ø CIL.	L	L1
32	332	313
40	396	375
50	432	410
63	503	480
80	606	578
100	665	633
125	784	754
rotazione 360° 360° rotation		
ø CIL.	L	L1
32	379	360
40	453	432
50	495	473
63	578	555
80	705	677
100	772	740
125	916	886

pignone femmina
female pinion

ø CIL.	A	B	C	D	E	F	G	H	J	K	P	Q	R	U	V	X	Y
32	71.5	50	33	47	G1/8"	46.5	20	18	5	25	14	25	25	50	16.3	M6	10
40	82	60	40	53	G1/4"	54.5	19	22	5	30	14	25	30	60	16.3	M6	10
50	93	70	50	65	G1/4"	60.5	22	25	6	32.5	19	30	32.5	65	21.8	M8	13
63	109	75	60	76	G3/8"	70.8	24	35	6	37.5	19	30	37	75	21.8	M8	13
80	142	99	80	94	G3/8"	93.5	24	50	8	49.5	24	45	50	99	27.3	M10	16
100	156.5	115	80	112.5	G1/2"	99	22	60	8	57.5	28	50	54	115	31.3	M10	16
125	188	125	90	136.5	G1/2"	118	29	70	8	70	28	60	60	140	31.3	M12	20

miniavviatore progressivo

mini slow-start valve



Modalità di funzionamento

L'avviatore progressivo è una valvola compatta e precisa che consente di alimentare un circuito pneumatico in due fasi.

(a) Dal momento in cui l'avviatore è collegato all'alimentazione, viene fornita al circuito una pressione progressivamente crescente fino al limite fissato agendo sulla vite di regolazione **R** (max 3.5 bar circa con una portata di 300 NI/min).

(b) Raggiunta tale pressione, l'avviatore progressivo passa ad alimentare il circuito con la pressione fornita dalla rete. Questa commutazione avviene in modo automatico senza intervento dell'operatore. Portata massima in questa fase 800 NI/min.

Valve operation

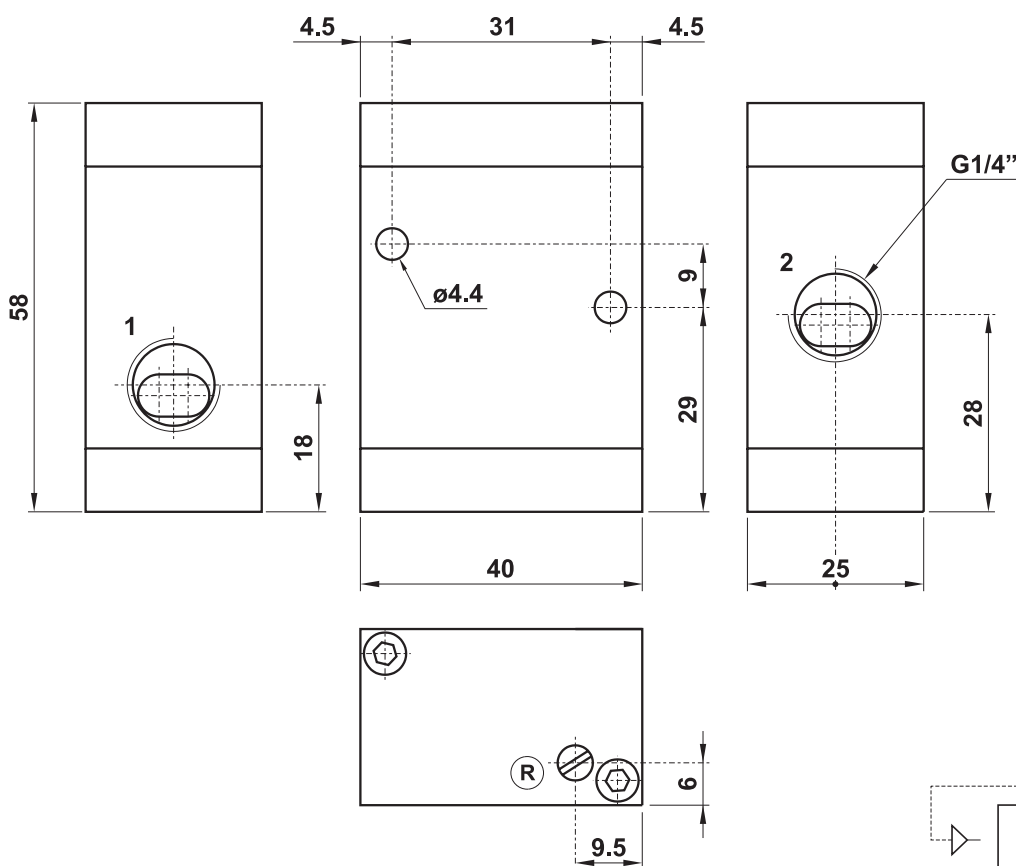
The slow-start valve is a very compact and sensitive valve which is designed to apply pressure to a pneumatic circuit in two phases.

(a) When valve is energised, a progressively increasing pressure is applied to the circuit until the set limit (about 3.5 bar maximum with flow rate 300 NI/min).

(b) Once the set pressure (screw **R**) has been reached, the slow-start valve begins to automatically feed the circuit with the system pressure. Maximum flow rate in this phase 800 NI/min.

CODICE DI ORDINAZIONE
ORDER CODE

10.022.4



Attacchi Ports	G1/4"
Massima portata nella fase (a) Maximum flow rate in the phase (a)	300 NI/min
Portata nella fase (b) Flow rate in the phase (b)	800 NI/min
Pressione di esercizio Working pressure	3 ... 10 bar 0.3 ... 1 MPa
Temperatura di esercizio Temperature range	max +60°C
Fluido Fluid	Aria filtrata 50µ con o senza lubrificazione 50µ filtered, lubricated or non lubricated air

Materiali

Corpo: alluminio 11S

Molle: INOX

Guarnizioni: NBR

Spole: alluminio nichelato

Parti interne: ottone OT58

Materials

Body: aluminium 11S

Springs: stainless steel

Seals: NBR

Spools: nickel plated aluminium

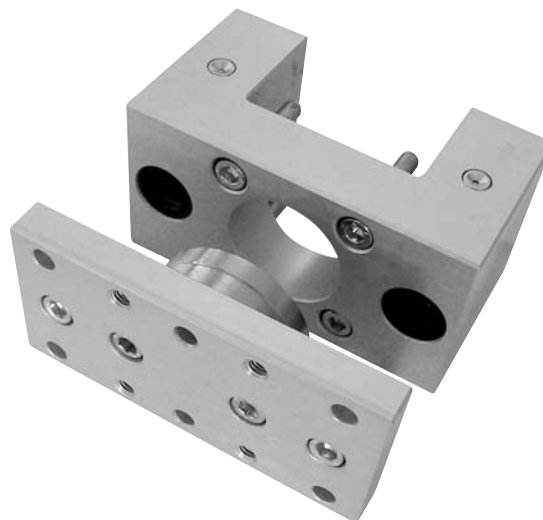
Internal parts: brass OT58

kit unità di guida

kit for guiding units

Il kit comprende tutti i pezzi necessari per il montaggio escluso gli steli, per la cui realizzazione il disegno si trova sul sito internet:
<http://www.azpneumatica.com/azweb/ita/kitguid.htm>

The kit includes all the necessary pieces. Rods are not included. The drawing for rod machining is available in internet at the following address:
<http://www.azpneumatica.com/azweb/ita/kitguid.htm>



Tipo "U" con bronzine

type "U" with sintered bronze rod guide

per alesaggio for bore	sigla part number	codice code
12-16	KUB012-016	27.271.0
20	KUB020	27.272.0
25	KUB025	27.273.0
32	KUB032	27.274.0
40	KUB040	27.275.0
50	KUB050	27.278.0
63	KUB063	27.279.0
80	KUB080	27.280.0
100	KUB100	27.281.0

Tipo "H" con bronzine

type "H" with sintered bronze rod guide

per alesaggio for bore	sigla part number	codice code
12-16	KHB012-016	27.259.0
20	KHB020	27.250.0
25	KHB025	27.251.0
32	KHB032	27.252.0
40	KHB040	27.253.0
50	KHB050	27.254.0
63	KHB063	27.255.0
80	KHB080	27.256.0
100	KHB100	27.257.0

Tipo "H" con cuscinetti a rotolamento

type "H" with linear ball bearings

per alesaggio for bore	sigla part number	codice code
12-16	KHS012-016	27.260.0
20	KHS020	27.261.0
25	KHS025	27.268.0
32	KHS032	27.262.0
40	KHS040	27.263.0
50	KHS050	27.264.0
63	KHS063	27.265.0
80	KHS080	27.266.0
100	KHS100	27.267.0